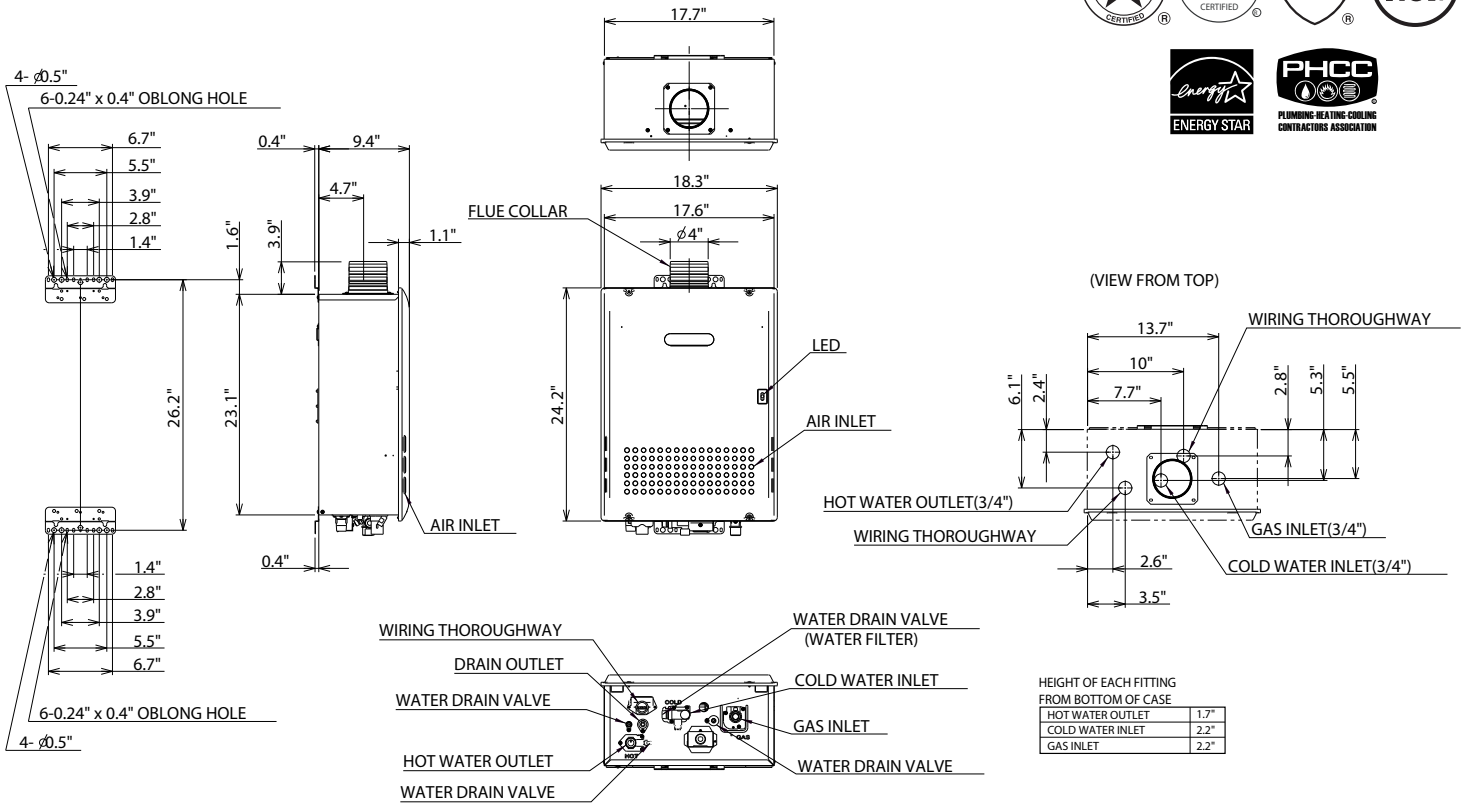


# Model N-0841MC Condensing Tankless Water Heater

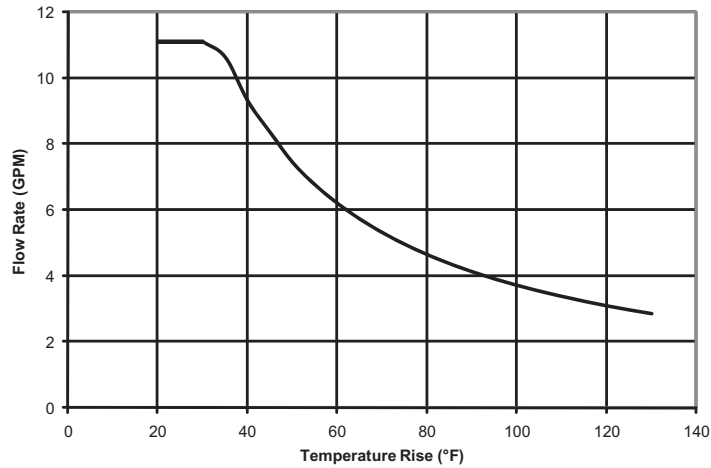


\* This model is eligible for the Federal tax credit of up to 30% of the water heater and installation costs (up to \$1,500) when installed in a residence between 1/1/2009 through 12/31/2010.

Item		Specification
Model Name		N-0841MC
Type	Installation	Indoor/Outdoor, Wall Hung
	Air Supply/Exhaust	Power Vented
Ignition		Direct Ignition
Operating Water Pressure		15 - 150 PSI
Minimum Flow Rate		0.5 GPM
Gas Supply Pressure		NG : 4.0" - 10.5" LP : 8.0" - 14.0"
Dimensions		24.2"(Height) x 18.3"(Width) x 9.4"(Depth)
Weight		73 (pounds)
Water Holding Capacity		0.5 Gallon
Connection Sizes	Water Inlet	3/4"
	Hot Water Outlet	3/4"
	Gas Inlet	3/4"
	Condensate Drain	1/2"
Power	Supply	120 VAC (60Hz)
	Consumption	NG: 106W LP: 109W Freeze Prevention 213W
Material	Casing	Stainless Steel
	Flue Collar	Stainless Steel
	Heat Exchangers	Copper Sheetting, Copper Tubing (Primary), Stainless Steel (Secondary)
Safety Devices		Flame Rod, Thermal Fuse, Lightning Protection Device (ZNR), Overheat Prevention Device, Freezing Prevention Device, Fan Rotation Detector, Neutralizer Overfill Sensor
Included Accessories		Remote Controller, Remote Controller Cord, Anchoring Screws, Condensate Neutralizer
Optional Accessories		Isolation Valves (#IK-WV-4), PVC Adapter (#VP4-ADAPT-PVC), PVC Bird Screen (#VT4-PVCS), Outdoor Vent Cap (#VC-4C), Remote Controller Outdoor Junction Box (#RC-OJB), ScaleShield (#SS-HB-1), Quick-Connect Cable (#QC-1M), Multi-System Controller (#SC-201-6M, -12M, -24M)

# Model N-0841MC Product Performance

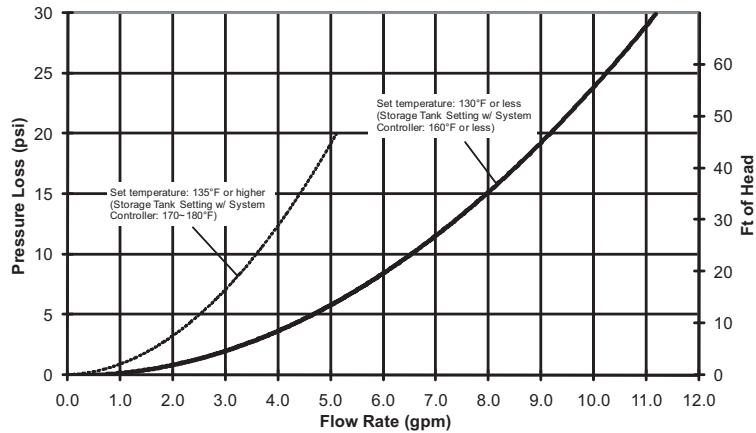
## Flow Rates



Temperature Rise (°F)	20	30	40	45	50	60	70	80	90	100	110	120	130
Flow Rate (GPM)	11.1	11.1	9.3	8.4	7.4	6.2	5.3	4.6	4.1	3.7	3.4	3.1	2.9

\*For peak flow rates in shaded areas, contact Noritz for proper setting.

## Pressure Loss



Item		Maximum Performance	Minimum Performance
Gas Consumption	NG	199,900 btuh	11,000 btuh
	LP	199,900 btuh	11,000 btuh
Thermal Efficiency		93%	
Energy Factor		NG: 0.91 LP: 0.93	
Hot Water Capacity	35°F Rise	10.6 Gal/min.	
	45°F Rise	8.4 Gal/min.	
	77°F Rise	4.8 Gal/min.	
	100°F Rise	3.7 Gal/min.	
Capacity Range		0.5 - 11.1 Gal/min.	
Temperature Settings		100-150°F (In 5°F intervals), 160, 170, 180°F (14 Options)	
Default Temperature Options		120, 130, 140, 180°F (Default is 120°F)	
Features		Quick-Connect (2 units), Multi-System (Up to 24 units), Pump Control, Temperature Lockout, High Elevation Adjustment	
Warranty		12/5- Residential, 3/5- Commercial or Circulation Use	
Approvals		CSA, UPC, NSF, Low NOx Approved By SCAQMD	

Noritz America reserves the right to discontinue, or change at any time, the designs and/or specifications of its products without notice.